

*Welcome to Robin
and Wren Classes*

September 2023

This is Mrs Halawa, Wren Class teacher.



This is Mrs Blackaby, Robin Class teacher.



Mrs Busby and Mrs Robinson are our teaching assistants in EYFS.



We enter our classrooms from our outside area. We say goodbye to our grown-ups at our classroom doors.



Robin Class



Wren Class

We can play and learn across both classrooms during 'free flow'. Some areas are the same in both rooms.

Both classes have a carpet area where we will have our whole class learning.



Here are some areas in Robin class.

Role play



Sand area



Blocks and small world



Here are some areas in Wren class.

Creative area



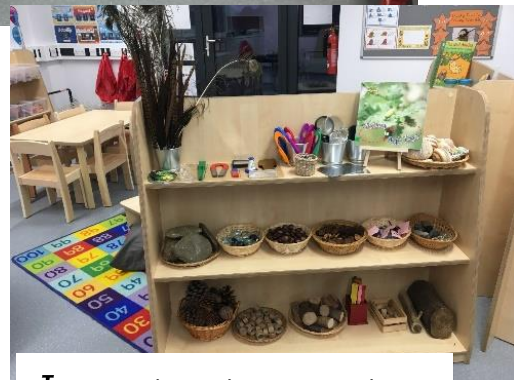
Painting area



Maths area



Investigation station



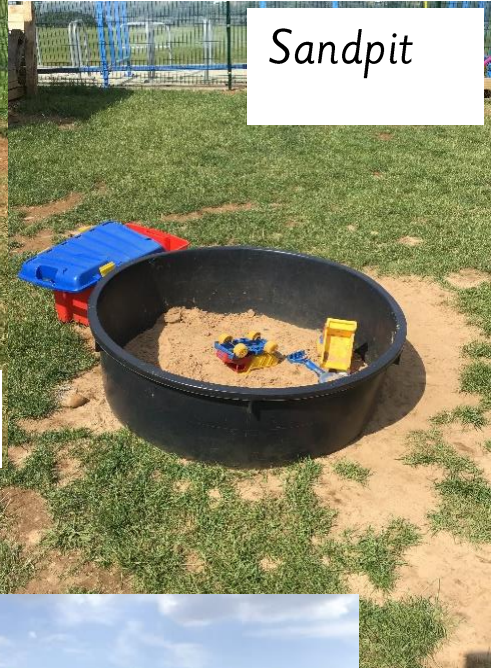
Some of our learning takes place outside.



Sounds area



Mud kitchen



Sandpit



Water area

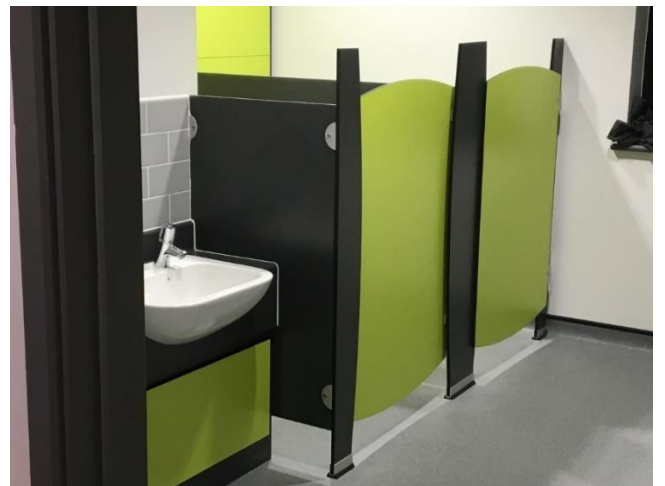
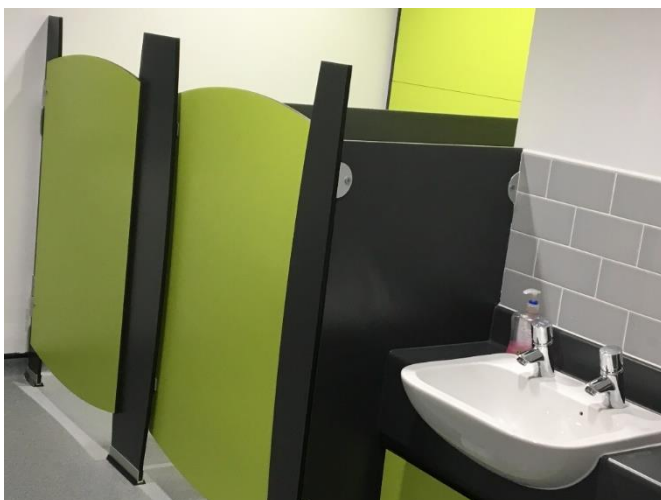


Large construction

We keep our wellies on the rack so we have them for when it is wet and when we do Forest school.



Each class has their own set of toilets. We can spot which is ours by the bird picture on the doors.



This is the hall. We eat our lunch in here. There are lots of grown-ups to help us.



After we have finished our lunch a grown up takes us back to the Key Stage 1 playground to play.

We also use the hall for some of our PE lessons.



Sometimes we use the MUGA (Multi-Use Games Area).



*We hope you enjoy looking at this
booklet as you get ready to come to
Gamlingay Village Primary.*

*We are really looking forward to
meeting you and starting our learning
journey together.*